

CONSULTANTS



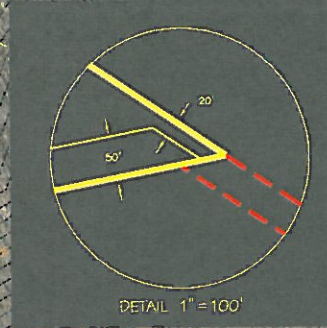
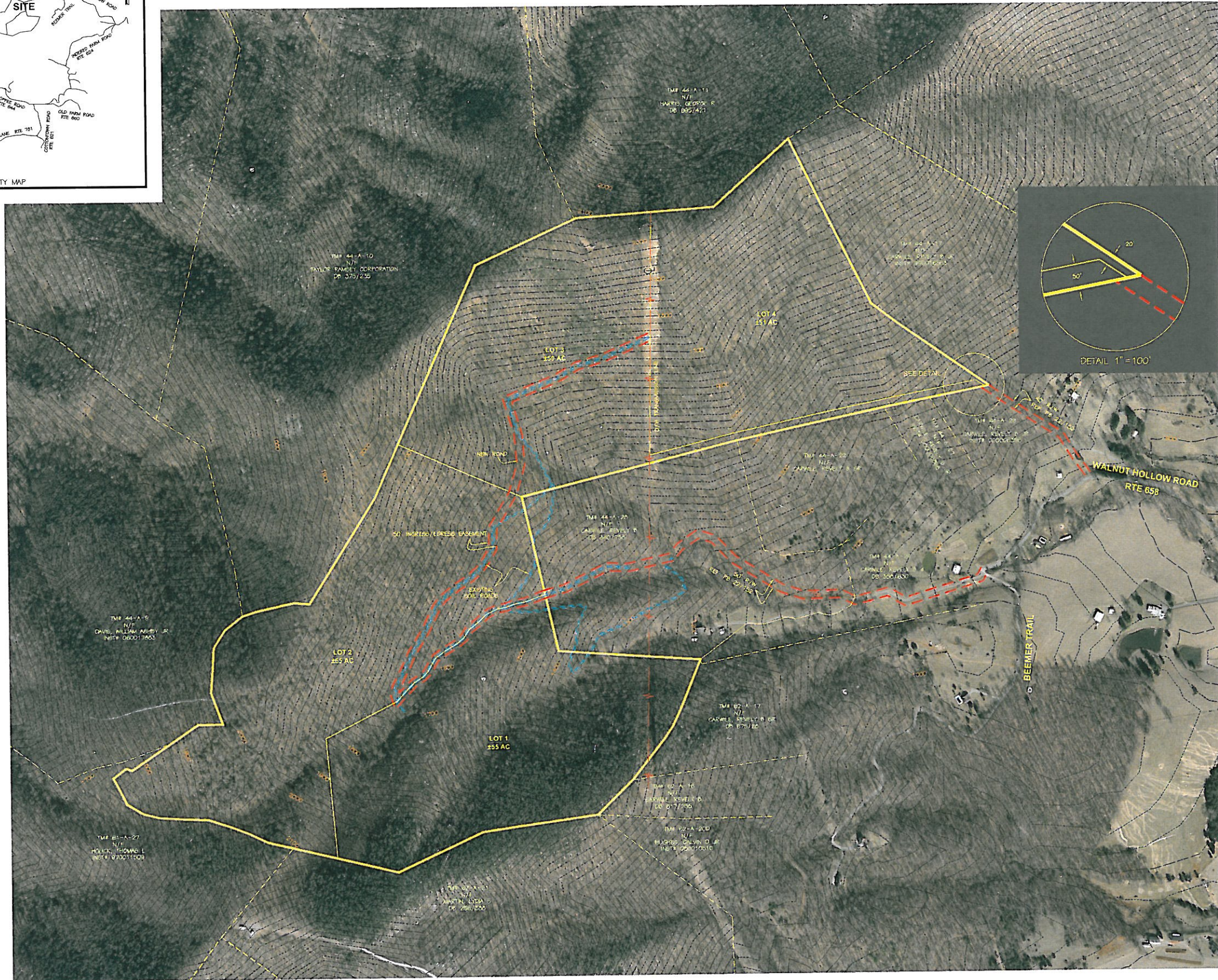
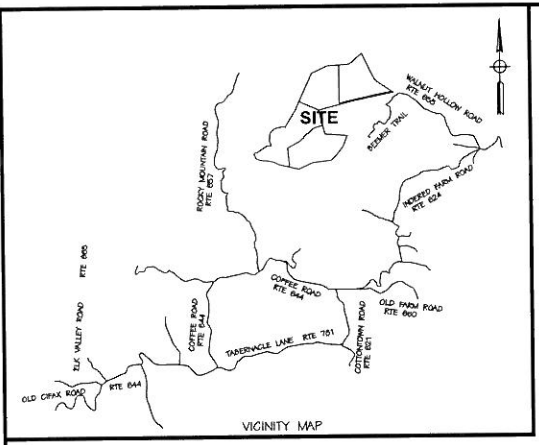
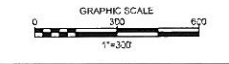
JOB:

BASE MAP
WALNUT HOLLOW ROAD
 JEFFERSON MAGISTERIAL DISTRICT
 BEDFORD COUNTY, VIRGINIA

CLIENT:

TAYLOR-RAMSEY CORPORATION

ISSUE: 6/24/09
 CONTOUR INTERVAL: 20'
 DESIGNED BY: WWP
 DRAWN BY: JMD
 CHECKED BY: RHO



NOTE:
 THIS MAP HAS BEEN PREPARED FROM RECORD INFORMATION AND IS NOT THE RESULT OF A CURRENT FIELD SURVEY. ACREAGE FOR THE PARCELS SHOWN HEREON HAS BEEN CALCULATED USING INFORMATION COMPILED FROM PLATS, DEEDS AND THE BEDFORD COUNTY GIS.